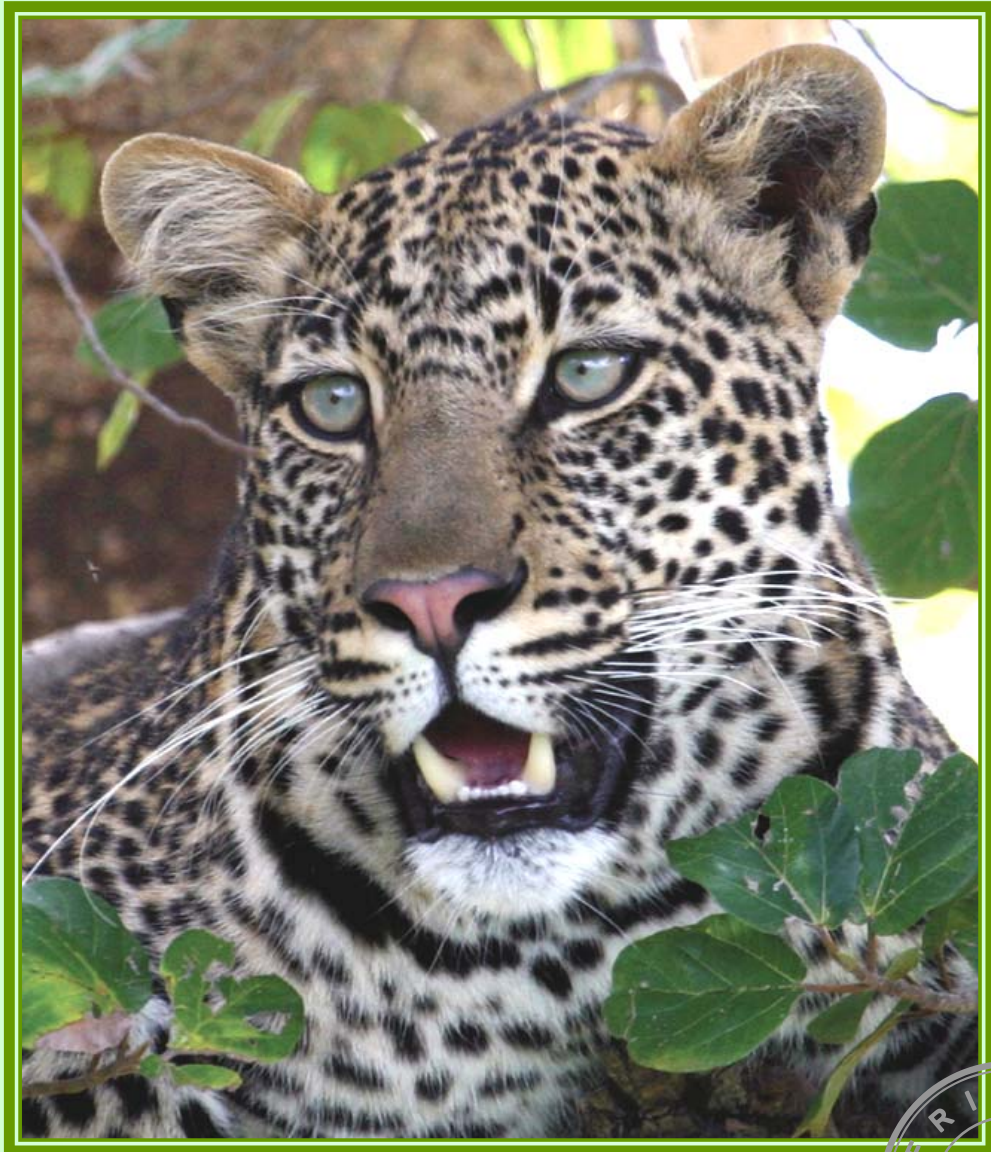


KENYA SAFARI 2009

Thrice Weekly From Atlanta On Delta Airlines



Introduction

Kenya is undoubtedly among the best locations for wildlife Safari & Beach Holidays in the world. Immortalized by countless wildlife films, Kenya needs little introduction. Kenya is blessed with an abundance of spectacular wildlife, lavishly gorgeous, incredibly photogenic landscapes as well as warm pristine white sandy beaches. Game reserves are magnificent, filled with all manner of wildlife, vibrant cultures, beautiful lakes and beaches, and sweeping vistas that seem to go on forever.

On this safari, you'll visit Kenya's famous wildlife sanctuaries, explore and capture the world-renowned biodiversity of East Africa while staying at deluxe safari lodges and world-class hotels throughout. The highlights include Amboseli National Park on the foot hills of Africa's highest and photogenic Mt. Kilimanjaro, Samburu Game Reserve, Africa's 2nd highest mountains - Mt. Kenya and Africa's No. 1 and world-famous Masai Mara Game Reserve now rated among the new wonders of the world. You'll view abundant wildlife seen all-year-round, and perhaps catch a glimpse of a wobbly-legged zebra foal at the start of the migration season. Like many of our guests from across the globe you will discover Kenya's breathtaking attractions, and take home only the fondest of memories!

Limited to minimum of 2 and a maximum of 18 participants per departure, this award-winning safari leaves nothing to chance showing only the most treasured wildlife parks and reserves of Kenya in style and comfort. The sweetest part is that Delta Airlines (DAL) will operate direct flights between Nairobi's Jomo Kenyatta International Airport and Hartsfield-Jackson Atlanta International Airport, via Dakar, Senegal effective 3 June 2009. So, it is now easier to fly to East Africa (Kenya) for business or leisure! Please note that all The Times Shown Are Local Times.

DAL Nairobi Flight Schedule 2009

Departure city	Departure	Arrival city	Arrival	Departure Days
Atlanta	16:10hrs	Nairobi	17:25hrs	Tuesday, Thursday, Sunday
Nairobi	20:10hrs	Atlanta	08:05hrs	Wednesday, Friday, Sunday



Best of Kenya Safari

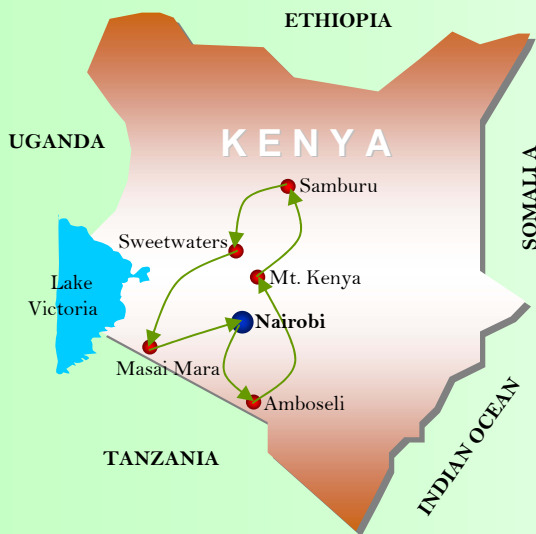
Safari Duration: 12 Days / 11 Nights [Incl. Air]

Departures: Every Tuesday, Thursday & Sunday From Atlanta on Delta Airlines

DETAILED ITINERARY:

Day 1 – DEPART FROM ATLANTA AIRPORT, USA

Let the adventure begin when you board your overnight Delta Airlines flight to Dakar, Senegal, West Africa. Arrive at Dakar where you have a 3-hour stop-over after which you continue with your flight to Nairobi, Kenya, East Africa. (D, B, L). Meals aloft.



Day 2 – ARRIVAL, NAIROBI, KENYA, EAST AFRICA

Karibu Kenya!!! Your safari adventure begins with a warm welcome at the airport and the transfer to the luxurious Serena, a member of the "Leading Hotels of the world." After dinner, we assemble for a safari briefing conducted by the Safari Director. Rest of the evening at leisure. Overnight at the hotel. (BLD). [Nairobi Serena Hotel](#)

Day 3 / 4 - Tue / Wed – AMBOSELI NATIONAL PARK

Depart by road for Amboseli National Park nestled at the foothills of Mount Kilimanjaro, the highest mountain in Africa. Lunch is followed by a late afternoon game drive. After dinner, settle back around a campfire for traditional Masai folk dancing. The following day, awaken to the sounds of the wilderness with an early morning game drive. Return to the lodge for breakfast. A late afternoon game drive is followed by dinner. (BLD) Two nights at [Amboseli Serena Lodge](#)

Day 5 - MOUNTAIN LODGE, MT. KENYA

This morning after breakfast, fly back to Nairobi, met and drive north to the slopes of Mount Kenya to Mountain Lodge - a tree hotel. Today's highlight is an afternoon nature walk in the Mount Kenya Forest escorted by the lodge's resident naturalist (subject to weather conditions). Game viewing is from the comfort of your lodge overlooking a watering hole and a salt lick that is constantly visited by a variety of animals. (BLD) [Mountain Lodge Serena](#)

Day 6 / 7 – SAMBURU GAME RESERVE

Continue with your safari adventure as you drive north with a stop at the famous signpost at the Equator. Take memorable photographs as you cross the Southern into the Northern Hemisphere. Samburu Reserve is famous for the rare and unusual reticulated giraffe, long-necked gerenuk, Colobus monkey, beisa oryx and Grevy's zebra. Enjoy a late afternoon game drive. The following day, explore the beauty and ruggedness of this game park on your morning and afternoon game viewing drives. (BLD) [Samburu Serena Lodge](#)

Day 8 – SWEETWATERS WILDLIFE SANCTUARY

This morning drive southwards to Sweetwaters Game Sanctuary, set in the heart of a large privately owned game reserve, enjoying magnificent views of Mt Kenya peaks. Each tented accommodation has a private verandah. Sitting within the quaint, original farmhouse are the dining room, bar and reception. Enjoy game-viewing drives. (BLD) [Serena Sweetwaters Tented Camp](#)

Day 9 - MASAI MARA GAME RESERVE

This morning transfer to the Nanyuki Air Strip where you will say "kwaheri" (good-bye) to your driver/guide and board a light aircraft for your flight to Masai Mara National Reserve. (Please note that the baggage allowance on the light aircraft is 33 pounds; any excess luggage should be left with the driver/guide for storage in Nairobi). On arrival, transfer to the lodge. Arrive in time for lunch and an afternoon game drive. (BLD) [Mara Serena Safari Lodge](#)

Day 10 - MASAI MARA GAME RESERVE

Enjoy a full day with morning and late afternoon game drives, with afternoons spent relaxing on the grounds of the hotel. On 2nd day, you have the opportunity to enjoy an early morning balloon safari (extra cost) over the Mara Plains, which includes a bubbly champagne breakfast upon landing. Or you can take an early morning game drive followed by breakfast at the hippo pool. Return to the lodge where you have the remainder of the morning at leisure before lunch and a late afternoon game drive. (BLD) [Mara Serena Safari Lodge](#)

Day 11 – BACK TO NAIROBI + DEPART

Breakfast is at leisure, followed by a transfer to the airstrip for your flight to Nairobi, where a Safari Tour Director will transfer you to the famous [Nairobi's Carnivore Restaurant](#) for sumptuous barbecue Lunch. Your afternoon is at leisure or doing the last-minute shopping at a souvenirs shop. Later you will be transferred to the airport for your overnight flight to USA. (BL)

Day 12 – ARRIVE ATLANTA, USA

Arrive in Atlanta, USA in the morning and connect to your flight / transportation home to share pleasant memories of your trip to Kenya with family and friends. Meals aloft. *Kwaheri!!!*

Safari Prices: 2009 / 2010

NOTE: Prices Seasonal as shown on the table below and are in US Dollar

NO. OF PASSENGERS PER GROUP	HIGH SEASON – 2009 1 st Jan – 31 st Mar & 1 st Jul – 15 Dec		LOW SEASON - 2010 1 st April – 30 th June	
	PPS	SRS	PPS	SRS
Each of 2 - 6	US\$ 6795.00	US\$ 1025.00	US\$ 5975.00	US\$ 215.00
Each of 7 - 12	US\$ 6380.00	US\$ 1025.00	US\$ 5520.00	US\$ 215.00
Each of 13 - 18	US\$ 6075.00	US\$ 1025.00	US\$ 5275.00	US\$ 215.00

Abbreviations : PPS = Per Person Sharing, SRS = Single Room Supplement, US\$ = U.S.A. Dollar [Currency]

INCLUDED IN THE QUOTED PRICE

- Round trip air ticket Atlanta / Nairobi / Atlanta including airport taxes
- Arrival and departure airport transfers with assistance
- Complimentary Authentic Safari Hats
- Complimentary baggage handling of two pieces per person
- Free excess baggage storage in Nairobi at your Nairobi Hotel
- Express check-in with assistance in your city hotels and safari lodges
- Bed and breakfast accommodation in your City Hotel
- Full board accommodation whilst on Safari at all safari lodges
- Transport in custom-designed 4x4 safari vehicles with window seat guarantee (Max 6 in each)
- At least a pair of standard Binoculars in each safari vehicle (Extra are available at a fee)
- All parks and game reserve entry gate fees including vehicle & driver fees
- Unlimited supply of bottled mineral water on safari and game drives
- Unlimited game viewing drives / photo sessions per day whilst on safari
- Farewell Lunch at the famous Carnivore Restaurant on the last day in Nairobi
- Services of an English - speaking and professional safari driver/guide
- Farewell Barbeque lunch at Nairobi's famous Carnivore Restaurant
- All Government taxes and levies where applicable

EXCLUDED IN THE TOUR PRICE

- Tourist entry Visa to Kenya (US\$ 50 PP) also available upon arrival at point of entry
- Travel Insurance Cover, Personal or Baggage (Highly Recommended)
- International airport's departures taxes (if not included in your ticket)
- Optional excursions not mentioned in the inclusions and/or quoted separately
- Expenses of personal nature such as phone calls, internet access, laundry etc.
- All alcoholic drinks, wines and spirits.
- Tips and gratuities to driver guides/lodge/hotel staff
- Day room at a Nairobi Hotel if required on the last day of safari
- All other extras not mentioned in the 'included'

VALUE ADDED FEATURES

- Membership to AMREF's Flying Doctors Emergency Evacuation Program*
- Illustrated Spectrum Guide® to Africa Wildlife Safaris and Animal Spotter®
- Assorted and Pre-Stamped 'AfriChoice!® African Safari Post Cards
- Complimentary 'AfriChoice!® Authentic African Safari Hat

NB: The AMREF's Flying Doctors Emergency Evacuation Program ONLY covers the cost of evacuating the casualties from emergency site to the nearest hospital by air or ground ambulance but does not cover hospitalization bills in case of emergency. All travelers are requested to purchase their own travel insurance from home before signing up for the trip.

Booking Conditions

Booking of this tour is governed by Our Booking Terms and Conditions. Please take some time to read and understand the governing terms available on this URL of our website;

http://www.africhoice.com/booking_terms.html

Reservation Deposits & Payments

(A) Reservations should be made by contacting AfriChoice! Tours & Travel, hereinafter referred to as AfriChoice! at the address indicated below. Safaris are booked and confirmed only on receipt of a 35% advance payment of the basic safari rate. This advance payment is due within five (5) days of making your firm reservation by either email or fax to our office.

(B) There shall be no binding contract until the advance payment has been received by AfriChoice! Failure to remit your advance payment on time will result in an automatic change of status of any confirmed space to a provisional basis and the possible inability to reinstate your reservation. When AfriChoice! receives your advance payment, a booking reference number will be assigned and noted on your original invoice. This number shall be deemed to constitute acceptance and confirmation of your booking. Payments can be made by Telegraphic Wire Transfer, by Credit Card, Travelers Cheques or in Cash. Details for payment by Wire Transfer to our bank are available on the URL indicated above.

(C) The balance is due no later than sixty (60) days prior to commencement of your safari. If the balance has not been received by that date, AfriChoice! shall be entitled in its discretion to treat your reservation as canceled, and consequently to forfeit such part of the advance payment as determined solely by AfriChoice!

(D) Any reservation made within sixty (60) days of commencement of a safari may be accepted provided space is available, payment in full is received, and provided that pre-departure documents can be delivered prior to departure.



Beach Extensions

These are available to Mombasa or Zanzibar for 2 or more nights but on prior requests. Confirmation is subject to availability of seats on the return journey. A Minimum of 2 nights Stay at the Beach Hotels is required. Please contact us for more information regarding beach stays and / safari extensions.